

Vital Statistics 2009

A new way to get population statistics

With this publication our presentation of population statistics will be integrated between our homepage (www.stat.gl) and our Statbank (<http://bank.stat.gl>).

We aim to give access to very detailed statistical informations and enable our users an easy way to define and download tables. Updated figures will be available in the Statbank in danish, greenlandic and english.

This transformation is planned for January 2011, but will in parts be in use from late September 2010.

On population we can present detailed, coherent and consistent statistical information for:

Population estimates: 1977-2010
Births: 1973-2009
Deaths: 1973-2009
Migration*: 1993-2009
Internal migration*: 1993-2009

* We expect to present data for 1981-2009 in 4. quarter 2010.

In creating these tables the present administrative subdivision has been used and municipalities are as defined January 1st 2009. At lower levels we use 2 concepts; districts are equivalent with municipalities prior to 2009 and localities. A locality is a place and can be any town, settlement, station, mine and can be inhabited or not. For definition we use the one ASIAQ (www.asiaq.gl) has determined. The Asiaq list on localities is as of now not complete with regards to historical localities.

To ensure consistency at detailed levels we have revised our data once again. Some minor inconsistencies have been corrected, and some differences can be found in comparing the revised tables with previously publications.

For this publication derivative demographic measures on fertility and mortality has yet to be calculated and are not available in the Statbank for full. The same goes for tables that require us to combine the Population register with information's from the Birth- and death registers of the Country Doctor's office.

For fast access to a relevant table in the Statbank, links are found below each table and graph on the following pages.

For additional information please contact Lars Pedersen by e-mail: larp@stat.gl

Overview 1. **Population January 1st by gender, 2002-2010**

	2002	2003	2004	2005	2006	2007	2008	2009	2010
Total	56.542	56.676	56.854	56.969	56.901	56.648	56.462	56.194	56.452
Men	30.180	30.249	30.335	30.319	30.182	30.005	29.885	29.809	29.936
Women	26.362	26.427	26.519	26.650	26.719	26.643	26.577	26.285	26.516

Visit our Statbank: (<http://bank.stat.gl/beest1>)

The rising population ... During 2009 total population rose by 258 persons. This is due to these changes:

Overview 2. **Changes to the population in 2009**

Population estimate January 1st 2009	56.194
+ births	895
- deaths	-444
+ immigrated	2.551
- emigrated	-2.740
- corrections	-4
Population estimate January 1st 2010	56.452

In the Statbank you can combine information on residence, gender, mothers age and place of birth from 1977 and onward. Geographically you can choose between municipalities, districts and localities. The most detailed table holds 475.200 tablecells.

Overview 3. **Births in the municipalities 2007-2009**

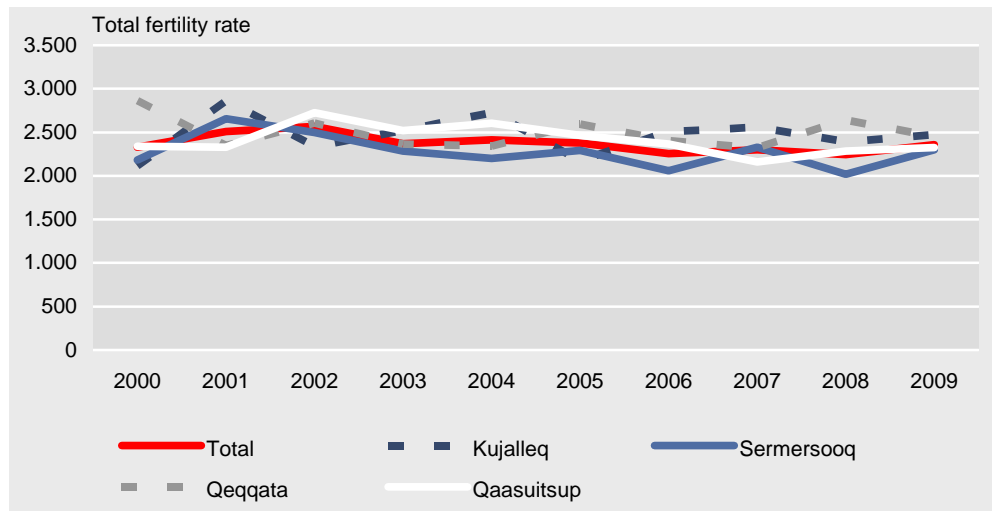
	2007	2008	2009
	number of live births		
Total	853	834	895
Kujalleq	117	110	121
Sermersooq	337	297	345
Qeqqata	146	163	149
Qaasuitsup	253	264	280

Visit our Statbank: (<http://bank.stat.gl/BEEBBLM2>)

From overview 3 we learn that 895 children were born in 2009, which is an increase of 61 compared to 2008. This is caused by a higher number of women in the childbearing ages. The relatively small birth cohorts from the mid-seventies has for most now completed their fertile period. They will be replaced by relatively larger birth cohorts in the coming years.

The fertility pattern has been unchanged with total fertility above reproduction level. Graph 1 shows the total fertility rates over the past 10 years. There are no major differences at the municipal level. But large differences can be found between towns and settlements. Visit our Statbank: <http://bank.stat.gl/BEEBBSF2>

Graph 1 **Total fertility rates in the municipalities 2000-2009**



Visit our Statbank: (<http://bank.stat.gl/BEEBBLSF2>)

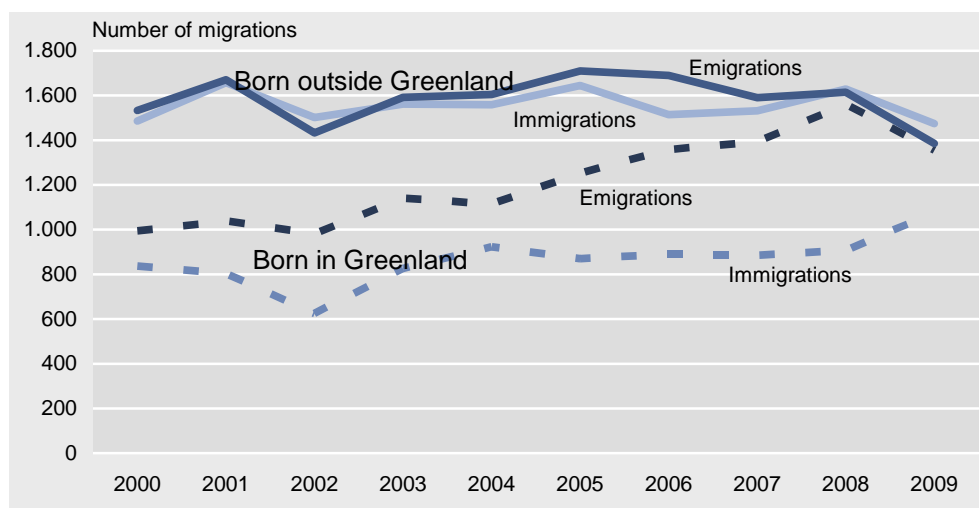
Overview 4 **Death in the municipalities 2008-2009**

	Men		Women		Total	
	2008	2009	2008	2009	2008	2009
Death						
Total						
Towns	203	211	151	160	354	371
Settlements	43	40	31	33	74	73
Total	246	251	182	193	428	444
Kujalleq						
Towns	34	44	23	28	57	72
Settlements	4	11	10	6	14	17
Total	38	55	33	34	71	89
Sermersooq						
Towns	77	73	53	50	130	123
Settlements	15	7	7	10	22	17
Total	92	80	60	60	152	140
Qeqqata						
Towns	26	22	19	27	45	49
Settlements	4	4	2	2	6	6
Total	30	26	21	29	51	55
Qaasuitsup						
Towns	66	72	56	55	122	127
Settlements	20	16	12	15	32	31
Total	86	88	68	70	154	158

Visit our Statbank: (<http://bank.stat.gl/beebbdm2>)

In the graph below the number of migrations by gender and place of birth 2000-2009 can be seen. Every year more people choose to emigrate than to immigrate. In 2009 2.551 persons immigrated while 2.740 persons emigrated.

Graph 2 **Migrations 2000-2009**



Visit our Statbank: (<http://bank.stat.gl/beebbiu2>)

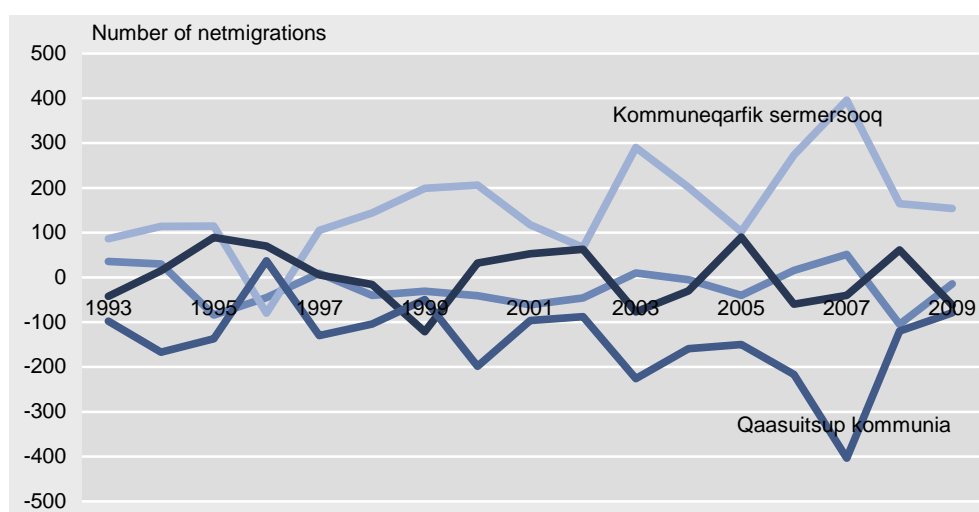
21.066 changes of addresses were counted in 2009, which is at same level as for the past 5 years. Most movings takes place within the same locality.

Overview 5 **Internal migrations 2009**

	Kujalleq	Sermersooq	Qeqqata	Qaasuitsup	Other localities	Municipality of removal total
Municipality of migration	3.226	7.686	3.893	6.246	15	21.066
Kujalleq	2.641	318	105	146	2	3.212
Sermersooq	358	6.524	430	521	7	7.840
Qeqqata	107	393	2.955	373	3	3.831
Qaasuitsup	116	442	402	5.204	3	6.167
Other localities	4	9	1	2	0	16

Visit our Statbank: (<http://bank.stat.gl/beeabaf2b>)

Graph 3 **Net internal migrations in the municipalities 1993-2009**



Visit our Statbank: (<http://bank.stat.gl/beeabaf2>)

